

Quarterly Examination 2017-2018

Std. : VIII
Subject : Biology

Full Marks : 80
Time : 2hrs.+15 min.

Section-A [40 marks] (Answer all questions)

Q1. (a) Name the following :-

[8]

- (i) The mineral that is needed for the synthesis of haemoglobin.
- (ii) One of the newest science.
- (iii) The cells that protect the body from disease germs.
- (iv) The organelle concerned with Intracellular digestion.
- (v) The category of plant tissue that have lost their ability to multiply.
- (vi) The deficiency disease caused due to lack of phosphorus.
- (vii) Study of prehistoric forms of life.
- (viii) Elongated cells in plants that are thickened at the corners.

(b) State 'true' or 'false'; rewrite the complete statement with the correct word by underlining it :- [8]

- (i) Chloroplast contains DNA and have the capacity to divide.
- (ii) Biology helps us to recognise and take steps towards pollution.
- (iii) Hippocrates is called as the Father of Biology.
- (iv) The sclerenchyma consists of actively dividing cells.
- (v) The protoplasm is described as an opaque fluid.
- (vi) Veins of leaves have both xylem and phloem.
- (vii) Water is used to produce digestives juices.
- (viii) Iron is required for proper working of thyroid gland.

(c) Fill in the blanks :-

[8]

- (i) Phloem consists of _____ , _____ , phloem parenchyma and phloem fibres.
- (ii) Genes are made up of _____.
- (iii) _____ is the study of fungi.
- (iv) Silk is produced by rearing _____.
- (v) _____ is the form in which carbohydrates are stored in animals.
- (vi) _____ is surrounded by microtubules located near the nucleus.

(vii) _____ are the simplest units of proteins.

(d) Define the following :-

[4]

(i) Eugenics (ii) Malnutrition (iii) Cell (iv) Protoplasm

(e) Match the following by rewriting in correct pairs :-

[8]

A

B

- | | |
|------------------------|---|
| (i) Organ | (a) Banana |
| (ii) Repair | (b) Cell-division |
| (iii) Potassium | (c) Tongue |
| (iv) Herpetology | (d) Dissolved in cytoplasm |
| (v) Calcium | (e) Birds |
| (vi) Ornithology | (f) Dairy milk |
| (vii) Anthocyanin | (g) gland cell giving sweat for evaporation |
| (viii) Cooling of Body | (h) Snakes |

(f) Draw a well labelled diagram of a plant cell.

[4]

Section-B [40 marks]

(Answer any four questions ONLY)

Q2. (a) Give two examples each of the following :-

[3]

- (i) Monosaccharides
- (ii) diasaccharides
- (iii) polysaccharides

(b) What is cell theory ? (Enlist 3 points)

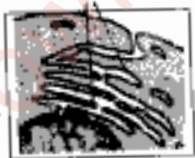
[3]

(c) Give any four characteristics of Parenchyma ?

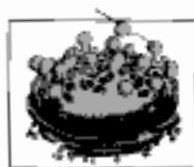
[4]

Q3. (a) Identify the given organelles and list their functions :—

[2+4]



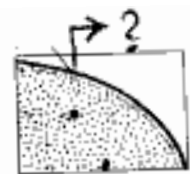
(A)



(B)



(C)



(D)

(b) Differentiate the following pairs :- (1 difference each).

[4]

- (i) Fats and Proteins (Based on function)
- (ii) Plant and Animal Cell (Based on the size of vacuole)

(iii) Calcium and sodium (Based on function)

(iv) Xylem and Phloem (Based on function)

Q4. (a) What is the role of roughage in our diet (2 points) and give two examples of the same. [2+1]

(b) List two points to prove that every activity of a living organism is the outcome of cellular activities. [2]

(c) Differentiate between Kwashiorkor and Marasmus based on the any three symptoms. [3]

(d) How does Biology helps us in making conscious citizens ? [2]

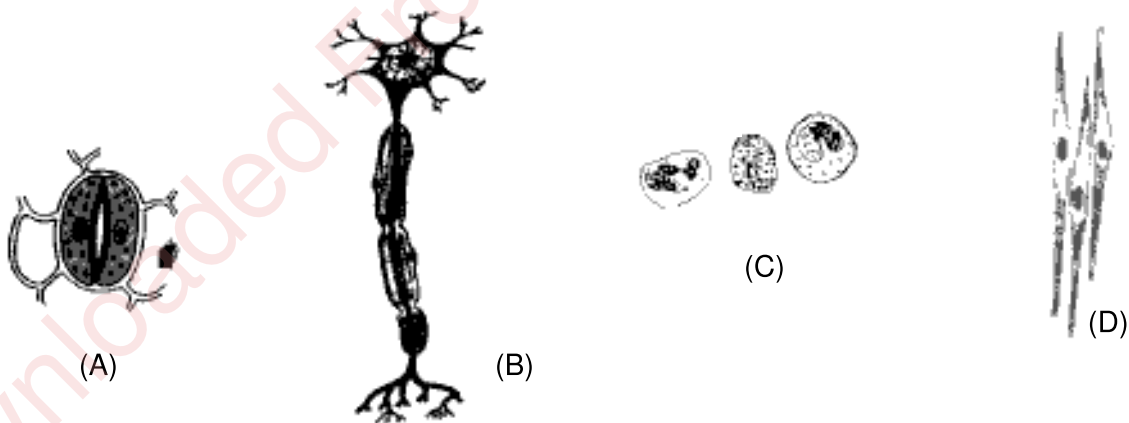
Q5. (a) Complete the given table :— [6]

<u>Vitamins</u>	<u>Rich Source</u>	<u>Deficiency Disease</u>
i) _____	Fish liver oil	ii) _____
iii) _____	iv) _____	Beri-Beri
Ascorbic acid (Vit. C)	v) _____	vi) _____

(b) What are stone cells ? Give an example of fruit where it is found. [2]

(c) Arrange the following in the logical sequence :—
tissue, organ system, organ, cells and organism. [2]

Q6. (a) Identify the given cells and list their functions. [2+4]



(b) Name the following : [4]

- (i) Study of bacteria.
- (ii) Science of growing fruits and vegetables.
- (iii) Hereditary units are called.
- (iv) Green colouring pigment in plants.