

ANNUAL EXAMINATION 2021-22

CLASS: VIII
SUBJECT: BIOLOGY

TIME: 2 HRS
MARKS: 100

SECTION A (60 MARKS)

Attempt all the questions from this section

Question no.1

A. Fill in the blanks

[10]

- Brain is protected by three coverings called _____.
- The main part of ____ is called cyton.
- Conjunctivitis is a viral infection of _____.
- AIDS is caused by retrovirus which is also known as _____.
- Rearing of honey bees is called _____.
- Absorption takes place by diffusion and _____ conducts food.
- Potassium is a _____ nutrient and iron is a _____ nutrient.
- BCG vaccination is for _____.
- _____ have more fibre content than concentrates.
- _____ bacteria are found in the root nodules of leguminous plants.

B. Very short answer type questions

[10]

- What does AIDS stand for?
- What does tobacco contain?
- What is the injury to tissue under the skin called?
- Give two examples of draught animals.
- Who is known as the architect of white revolution?
- Name a fungus that consist of carbohydrates , proteins and fats.
- Give two examples of stimulus
- Name the cell structure that is semi permeable.
- The process movement of salt molecules from an area of high concentration to low concentration.

j) The phenomena in the leaves, stem and flower droop due to high rate of absorption is called as _____

2. Match the columns

[10]

Column A

Column B

a) Dengue

i) varicella Zoster

b) Filariasis

ii) pollen

c) Polio

iii) Vibrio Cholerae

d) Chicken pox

iv) Mycobacterium Tuberculosis

e) Typhoid

v) Virus

f) Malaria

vi) Salmonella Typhii

g) AIDS

vii) Wucheria Bancroftii

h) Tuberculosis

viii) Allergens

i) Cholera

ix) DENV

j) conjunctivitis

x) Plasmodium

3. Write only true or false

[10]

a) Agar is prepared from red algae

b) Hilsa and tuna are kinds of honey bee.

c) Organic farming degrades the biological activity of the soil

d) Bean, peas, and gram are examples of pulses.

e) Drip irrigation method is used where flood or furrow method is not possible.

f) Amaranthus is a kharif crop.

g) There are 34 pairs of spinal nerves emerging from the spinal cord.

- h) Maximum transpiration takes place through cuticle.
- i) Vascular system is present only for the distribution of water in plant body.
- j) Upper surface of leaf has less transpiration than lower surface.

Define the following terms:

[10]

- a) Hybridization
- b) Incubation period
- c) Apiary
- d) Vaccination
- e) Osmosis

F. Differentiate between

[5x2=10]

- a) Sensory neuron and motor neuron
- b) Active transport and passive transport
- c) Indigenous and exotic breeds
- d) Sympathetic and parasympathetic nervous system
- e) Xylem and phloem

SECTION B (40 MARKS)

Attempt any four questions from this section. Each question carries ten marks.

Question no.2

- a) What are the various parts of a neuron? Explain with the help of a well labelled diagram. [5]
- b) What do you understand by first aid? How would you administer first aid to a person from snake bite. [5]

Question no.3

- a) Define transpiration. With the help of an activity explain the process of transpiration. [5]
- b) Write any four agricultural task and practices performed by farmers. Write three significance of ploughing. [5]

Question no.4

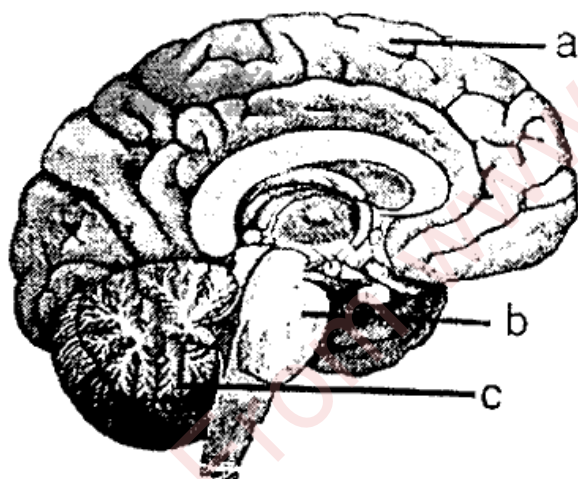
- a) Write four factors affecting the rate of transpiration and two of its importance in plants. [5]
- b) Write any five differences between manure and fertilizers.[5]

Question no.5

- a) Describe the pathway of reflex arc with a well labelled diagram. [5] ✓
- b) Explain the bad habits that lead to illness. [5] ✓

Question no.6

- a) Algae is useful to us in many ways. Describe [5]
- b) Identify the given diagram and



- i. Label the parts marked 1,2 and 3 [1/2] ✓
- ii. Write the function of the parts marked 1,2,3

Whatsapp @ 9300930012

Send your old paper & get 10/-

अपने पुराने पेपर्स भेजे और 10 रुपये पायें,

Paytm or Google Pay से