

**Final Examination - 2017-2018**

**BIOLOGY**

Time : 2 hrs. + 15 min.

F. M. : 80

Std. : VIII

**SECTION A (40 Marks)**

(All questions are compulsory)

- I. I. Name the followings : (10)
- a. The first produced antibiotic from a fungus.
  - b. Nitrogen fixing bacteria found in roots of legumes.
  - c. Thick inter cellular substance present in Cartilage
  - d. Axons bundled together to form a structure
  - e. The reproductive organ of an earthworm
  - f. The protozoan that causes malaria
  - g. The process of casting off and the regrowing of the exoskeleton by arthropoda
  - h. The two types of devices commonly used for removing the particulate air pollutants
  - i. The chemical substance mainly responsible for tooth disorders.
- II. Fill in the blanks : (10)
- a. The municipal bodies must ensure the supply of clean germ free \_\_\_\_\_ and an efficient \_\_\_\_\_ disposal.
  - b. \_\_\_\_\_ is hygienic and cost effective solution to human waste disposal.
  - c. Typhoid is a \_\_\_\_\_ disease.
  - d. \_\_\_\_\_ fish should be introduced in the ponds for biological control of mosquitoes.
  - e. The chordates which possess a backbone is \_\_\_\_\_
  - f. The liquid part of the blood is called \_\_\_\_\_
  - g. Phylum \_\_\_\_\_ have a true body cavity called \_\_\_\_\_
  - h. Unwanted entry of disease germs into drinking water or edible food is called \_\_\_\_\_.
- III. Mention if the following statements are true or false, if false then rewrite the correct statement (8)
- a. Sewage is the commonest source of contamination of water in the cities.
  - b. Mosquitoes are the source of dysentery germs
  - c. Flyash is the gaseous waste of cement industry.
  - d. Septic tanks are used to degrade the organic portion of the waste.

- e. Mollusca have soft segmented body enclosed in a shell.
- f. Muscles of the iris of the eye are of voluntary type.
- g. Cartilage has no blood vessels or the nerves in it.
- h. Nitrobacter is a denitrifying bacteria.

IV. State the location for the following tissues : (4)

- a. Cardiac muscles
- b. Lymph
- c. Tendon
- d. Areolar tissue

V. Match the followings : (8)

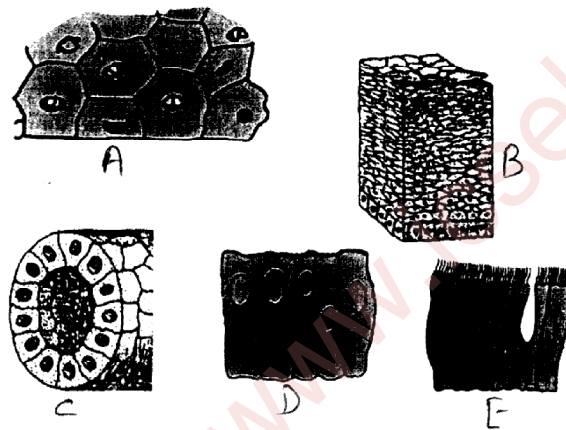
- | A              | B                      |
|----------------|------------------------|
| a. Annelida    | (i) Dengue             |
| b. Pisces      | (ii) Earthworm         |
| c. Aedes       | (iii) Trout            |
| d. Rat Flea    | (iv) Breed in manholes |
| e. Cockroaches | (v) Cowdung            |
| f. Manure      | (vi) Plague            |
| g. Bagasse     | (vii) Cobalt - 60      |
| h. Radioactive | (viii) Sugarcane       |

SECTION - B (40 marks)

(Attempt any four questions)

- 2. i. Give reasons for the following : (3)
  - a. Broken glass utensils are a kind of non-degradable waste.
  - b. Tinned and sealed food is not always safe to eat.
  - c. For mushroom cultivation little land area is required
- ii. Write two common bacterial diseases of cattle. (2)
- iii. List any three effective methods for controlling houseflies. (3)
- iv. Define electronic waste and write two examples for it. (2)
- 3. i. Name the two types of dysentery and their causative germs and also mention one main precaution against them. (2+2+1)
- ii. Differentiate between the followings : (5)
  - a. Cells of involuntary and voluntary muscle. (functions)
  - b. Flatworm and Roundworm. (Phylum)

- c. Bat and Pigeon. (class)
- d. Decay and Putrefaction. (Definition)
- e. Cartilaginous and Bony fish. (Type of Endoskeleton)
4. i. Mention the class of vertebrates for the followings : (5)
- a. Crocodile    b. Penguins    c. Toad    d. Shark    e. Whale    f. House lizard
- g. Dolphin    h. Salamander.    i. Skates    j. Heloderma
- ii. Identify the structure given below and give an example of each. (5)



5. i. Name the two common kinds of mosquitoes and the diseases they transmit and give two control measures to stop breeding of mosquitoes. (2+2)
- ii. What is incineration? What are the two precautions to be taken while incineration process? (1+2)
- iii. Write in proper sequence the five major steps in the cultivation of the common edible mushroom. (3)
6. i. Draw a labelled diagram of a nerve cell. (4)
- ii. Give one example of each of the following tissues where as they are located. (3)
- a. Elastic cartilage    b. Unstriated muscles    c. Voluntary Muscle
- iii. Write three major steps for manufacture of cheese. (3)