

Half Yearly Examination 2025-26

Class – VIII

Subject – Biology

Time : 2.30 hrs.

M.M.- 80

Instructions :

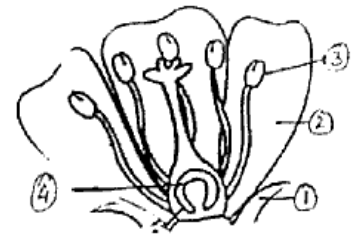
- You will not be allowed to write during first 15 minutes.
- This time is to be spent in reading the question paper.
- This paper is divided in to two sections A&B.
- Section A is compulsory. Attempt any four questions from sections B.
- Please do not write anything on question paper.

Section 'A' [40 Marks]

Q. 1. Choose the most appropriate :

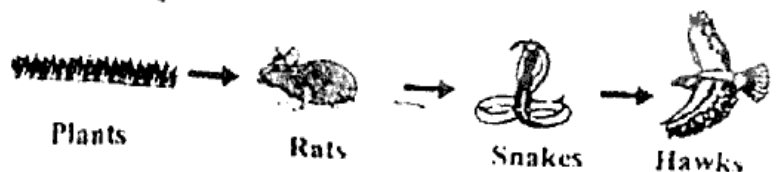
[15]

- (a) Which of the following is a life – saving hormone for people with diabetes ?
(i) Estrogen (ii) Insulin (iii) Adrenalin (iv) Growth hormone
- (b) Which of the following is NOT a part of the sperm ?
(i) Scales (ii) Neck (iii) Tail (iv) Head
- (c) Rhizobium shows symbiosis with :
(i) rice plant (ii) wheat plant (iii) pea plant (iv) All of these
- (d) Gestation period in Humans is of _____ days.
(i) 645 (ii) 280 (iii) 282 (iv) 820
- (e) In grafting, the stem cutting from a desired plant is called :
(i) stock (ii) sucker (iii) rhizome (iv) scion
- (f) Observe the given flower. The part responsible for attracting the pollinators is labelled as :
(i) 1
(ii) 2
(iii) 3
(iv) 4



- (g) Which of the following is located in the scrotal sac ?
(i) Penis (ii) testes (iii) Vas deferens (iv) accessory glands
- (h) Which of the following stems is garlic ?
(i) Rhizome (ii) Tuber (iii) Bulb (iv) Corm
- (i) Vegetative propagation is a type of asexual reproduction in which _____ is/are used.
(i) stem (ii) leaf (iii) root (iv) all of these

- (j) In the given food chain, the hawk gets 7J of energy from the snake. What is the total energy stored in the plant ?



- (i) 7 J (ii) 70 J
(iii) 0.007 J (iv) 7000 J
- (k) Which of the following is produced in the testis ?
(a) Sperms (b) semen (c) oestrogen (d) Ova
(i) a and b (ii) a and d (iii) a, b and e (iv) b, d and e
- (l) Primary producers are also known as :
(i) autotrophs (ii) heterotrophs (iii) herbivores (iv) none of these
- (m) Assertion (A) Islets of Langerhans are present in thyroid gland
Reason (R) Islets of Langerhans help in secretion of insulin.
(i) Both A and R are true and R is correct explanation of A.

(ii) Both A and R are true but R is not correct explanation of A.

(iii) A is true but R is false

(iv) A is false but R is true

(n) Assertion (A) : Sexual reproduction requires two partners.

Reason (R) : Male and female gametes come together during sexual reproduction.

(i) Both A and R are true and R is correct explanation of A.

(ii) Both A and R are true but R is not correct explanation of A.

(iii) A is true but R is false.

(iv) A is false but R is true

(o) Assertion (A) : Parts of Pistil are anther and filament.

Reason (R) : Bisexual flowers are those which contain both stamen and pistil.

(i) Both A and R are true and R is correct explanation of A.

(ii) Both A and R are true but R is not correct explanation of A.

(iii) A is true but R is false

(iv) A is false but R is true

Q. 2. Name the following.

(a) The cell formed as a result of fusion of male and female gametes.

(b) What is the process of production of sperms termed as ?

(c) What do bacteria, fungi, etc in an ecosystem represent ?

(d) A mass of unorganized, plant cells in tissue culture.

(e) Study of the interaction between living organisms and their environment.

Q. 3. Write the exact location of the following :

(a) Calyx (b) Scrotum (c) Cervix (d) Spores (e) Pancreas.

Q. 4. Write the function of the following.

(a) Estrogen (b) Ovaries (c) Placenta (d) Radicle (e) Thyroxine.

Q. 5. Match the column :

A

B

1. Fish

(a) Ginger

2. Aestivation

(b) Asparagus

3. entomophily

(c) Dahlia

4. Stem tuber

(d) External Fertilization

5. Tuber Root

(e) Zygote

(f) Summer Sleep

(g) Strawberry

Q. 6. Project work.

Section – B [40 Marks][Attempt any four questions from this section]

Q.7(a) Define : (i) Binary fission (ii) gestation period.

(b) Give the two characteristics of each wind – pollinated flowers and water pollinated flowers.

(c) Study the picture given and answer the following : [3+1+1]

(i) Identify the endocrine glands in the figure and label the gland

a-f

(ii) Name the hormone secreted by gland labelled b.

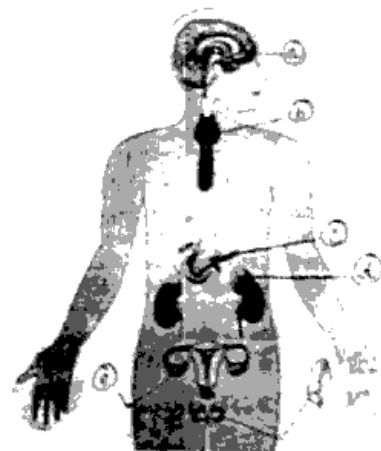
(iii) Write the main function of gland labelled b.

Q.8(a) Differentiate between :

[2]

(i) Testes and Ovaries

(ii) Sexual reproduction and vegetative propagation.



(b) Nowadays, vegetative propagation is being practiced widely. How is it beneficial to the farmers ?

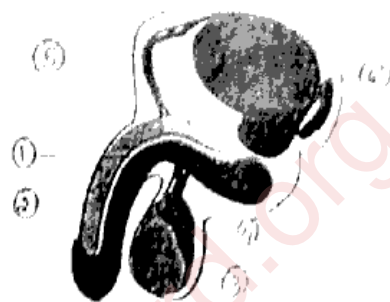
(c) Which gland is known as master's gland and why ?

(d) Study the picture given below and answer the following questions.

(i) Label the parts numbered 1,2,3,4.

(ii) Identify the organ system.

(iii) What is the significance of part labelled 3 being located in a sperate sac outside the body ?



Q.9(a) Who are hermaphrodites ? Give any two examples. [2]

(b) Draw a well - labelled diagram of a Bisexual flower.

(c) Explain the process of tissue culture.

(d) What is parasitism ? Give an example.

Q.10(a) Who are called the nature's scavengers ?

(b) Given below are jumbled food chains, correct their sequence and rewrite them.

(i) Hawk → Grasshopper → Grass → Frog → Snake

(ii) Grass → Eagle → Fox → Rabbit

(iii) Hydrilla → Large Fish → Killer whale → Small fish

(c) Why are forest important ? State any four points.

(d) Give any 2 ways of stress management.

Q.11(a) Why do some animals show hibernation ?

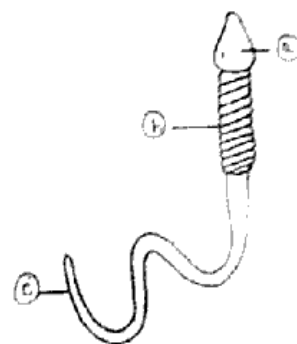
(b) Explain the process of fertilization in flowering plants step by step.

(c) Study the picture and answer the following questions. [5]

(i) Identify the parts labelled a, b, c.

(ii) Name the term used for the production of sperms.

(iii) Which part in the female system corresponds to sperm in the male system ?



Q12(a) Differentiate between environment and ecosystem. [1]

(b) What are hormones ? Write any two characteristics of hormones. [3]

(c) Explain Symbiosis with the help of example. [2]

(d) Given below is an incomplete table showing names of the endocrine glands, hormones secreted by them and key function of the hormones. Complete the table by filling in the blanks numbered 1 to 8 [4]

Gland	Hormone	Function
1	growth hormone	2.
thyroid	3	regulates rate of metabolism
4.	adrenaline	5.
6.	insulin	7.
8.	oestrogen	reproductive growth & development