

1st SEMESTER EXAMINATION, 2022 -2023

CLASS 7

PHYSICS

MARKS 25

TIME : 1½ HRS.

PART-1 [Compulsory part]

[2.5]

I. Answer in one word

1) Stationery object are said to be at....

2) Volume of a container is also known as...

3) The motion of a car running at a constant speed is an example of motion.

4) is an instrument used to measure the distance travelled by a vehicle.

5) Physical quantities which have both magnitude and direction are called.

[2.5]

II. Match the following

1) Motion of a fish under water

a) Non-uniform motion

2) Volume

b) Random motion

3) Motion of a train starting from a railway station.

c) Beam balance

4) Mass

d) Non periodic motion.

5) The running of a batsman between the wickets

e) measuring cylinder.

III. Write T for true and F for false statement and correct the false statement. [2.5]

1) Distance between two cities are measured in kilometres.

2) A straight line graph parallel to the time axis tells us that the object has become stationery.

3) The mass of a body can be zero.

4) The speed of train A covering 360 km in 6 hours is more than train B covering the same distance in 4 hours.

5) If a car is running slow we say that its speed is low.

IV. Circle odd one out and give reason.

[2.5]

1) area, volume, length, density.

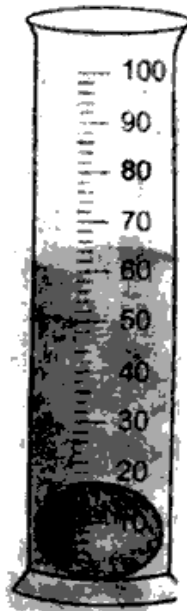
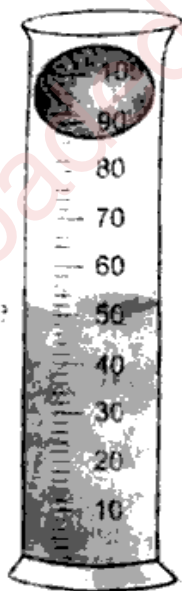
2) speed, time, temperature, height.

3) spinning top, bullet fired from gun, potter's wheel, turning of blades of fan.

PART-B (Optional part)

(Do any three)

- iv. i) A solid cylinder has a radius of 5 cm and the length of 14 cm. It has a density of 2.4 g/cm^3 . What is the mass of the cylinder? [2]
ii) How will you find the density of irregular object? [1]
iii) A car is running at a speed of 60 km/h. How much time will it take to cover a distance of 270 km? [2]
- v. i) How will you find the area of irregular object? Explain. [2]
ii) Write formula for volume of cylinder, cube and a sphere. [1]
iii) The distance between two stations is 240 km a train takes 4 hour to cover this distance calculate the speed of train in m/s [2]
- vi. i) Differentiate between mass and weight. [2]
ii) What type of motion does a straight line represent? [1]
iii) A stone of mass 30 gram is placed in a measuring cylinder containing some water the reading of the water level increases from 50 cm^3 to 60 cm^3 . What is the density of the stone? [2]
- viii. i) A block is 30 cm on each side and so has a volume of 27000 cm^3 it is made of granite which has a typical density of 2.8 g/cm^3 . What is the mass of block? [2]
ii) Calculate the volume of stone from the given figure. [1]



iii) Define the following

1) amplitude

2) Frequency.

[2]