

Final Term Examination 2017-2018

Std. : VII
Subject : Biology

Full Marks : 80
Time : 2Hrs.+15mins.

SECTION — A [40 Marks] (Attempt all questions from this section)

- 1. (a) Name the following : (only answer) [8]**
- (i) The green pigment present in leaves.
 - (ii) A synthetic source of plant nutrients which supplies specific nutrients to the soil.
 - (iii) Two bean shaped cells surrounding the stoma.
 - (iv) The top part of the tooth outside the gums.
 - (v) The digestive juice secreted by salivary glands.
 - (vi) Special respiratory organ in aquatic animals like fish, tadpole etc.
 - (vii) The teeth which helps in tearing the food.
 - (viii) Finger - like projections in the inner wall of small intestine.
- (b) Fill in the blanks : (only answers) [8]**
- (i) _____ is the basic structural and functional unit of the kidney.
 - (ii) _____ is an example of insoluble plant waste.
 - (iii) Gap between incisors and premolars is called _____
 - (iv) Green plants, during photosynthesis, take CO_2 in through _____ in their leaves.
 - (v) Respirator organ in woody stems are called _____.
 - (vi) In tobacco plant, _____ is made in the roots.
 - (vii) Transpiration occurs through stomata by the process of _____.
 - (viii) The arrangement of teeth in the jaws is called _____.
- (c) State 'True' or 'False'. If 'False', rewrite the whole statement with the correct word : (only answer). [8]**
- (i) All cells use oxygen to produce energy.
 - (ii) Kidneys are the most important organ of the urinary system.
 - (iii) Gastric juice is secreted by the small intestine.
 - (iv) Tooth dentine is the hardest material in our body.

- (v) The removal of wastes through anus is called excretion.
- (vi) Xylem transports water and dissolved minerals upward from roots.
- (vii) Faeces is the liquid waste removed by the urinary system.
- (viii) Transpiration rate decreases with an increased wind flow.

(d) Match the following :

[6]

Column A

Column B

- | | |
|---------------------|---------------------------|
| (i) Permanent teeth | a) Anaerobic respiration. |
| (ii) Taste buds | b) Cockroach |
| (iii) Trachea | c) excess sugar |
| (iv) Pancreas | d) 32 |
| (v) Molars | e) 6 in each jaw |
| (vi) Fermentation | f) Tongue |

(e) Define the following :

[4]

- | | |
|------------------|--------------------|
| (i) Assimilation | (iii) Digestion |
| (ii) Symbionts | (iv) Transpiration |

(f) Give the location of the following :

[3]

- | | | |
|-------------|----------------|----------------|
| (i) Alveoli | (ii) Spiracles | (iii) Diastema |
|-------------|----------------|----------------|

(g) Give the function of the following :

[3]

- | | | |
|------------|--------------------|---------------------|
| (i) Saliva | (ii) Hairs in nose | (iii) Blood vessels |
|------------|--------------------|---------------------|

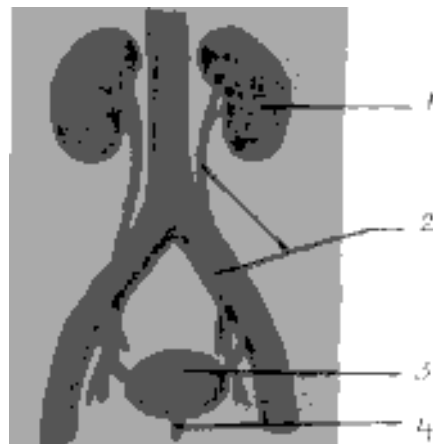
SECTION — B [40 Marks]

(Attempt any 4 questions)

2. (a) List the factors affecting transpiration.

[2]

(b) Identify the system and label the 4 parts of the given figure.



[1+4=5]

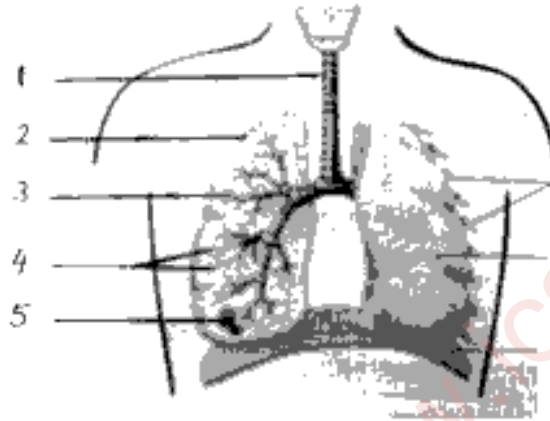
(c) Give any 3 differences between Respiration and Photosynthesis. [3]

3. (a) Which two tests are conducted by the medical practitioners to diagnose what is wrong with the patient ? [2]

(b) Give 4 examples of plant wastes in the form of secretions. [2]

(c) Define 'stomatal apparatus'. [2]

(d) Label the parts 1 to 5 [2½]



(e) Give one word for the following : [1½]

(i) Juice secreted by the glands in the stomach.

(ii) Chemicals that help to digest food.

(iii) Teeth which helps in cutting the food.

4. (a) State any 3 main functions of the tongue. [3]

(b) Name any 4 digestive enzymes. [2]

(c) Give reasons why — [5]

(i) No digestion occurs in oesophagus.

(ii) We cannot digest cellulose.

(iii) Transpiration is faster during sunny days than on cloudy days.

(iv) Excretion is a necessary process.

(v) We should breathe through our nose only and not through the mouth.

5. (a) Differentiate between the following pairs : [5]

(i) Digestive System and Alimentary canal.

(ii) Breathing and Respiration.

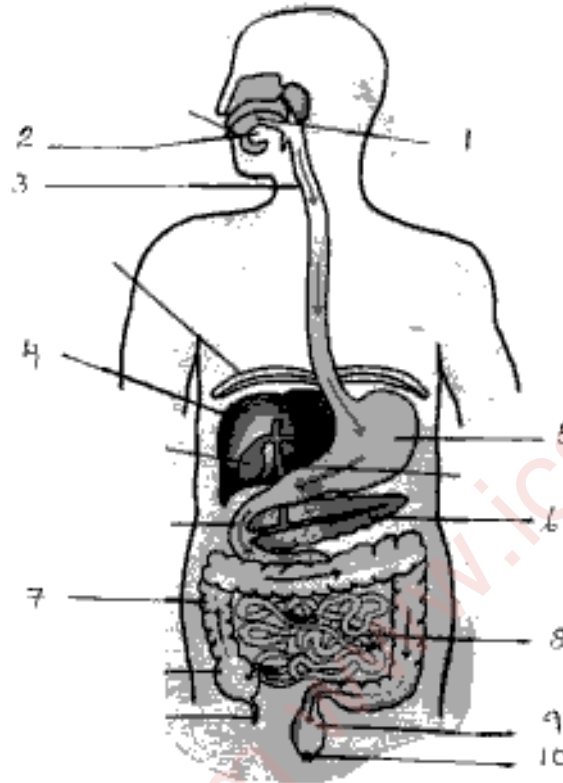
(iii) Absorption and Assimilation.

(iv) Aerobic respiration and Anaerobic respiration.

(v) Small intestine and Large intestine.

(b) Label the parts of the digestive system from 1—10.

[5]



6. (a) Give the 2 importance of transpiration.

[2]

(b) What are Raphides ? Give an example.

[2]

(c) Name the respiratory organs in

(i) young green stems.

(ii) roots.

[2]

(d) What are "villi" ? Give 2 functions of "villi" ?

[2+2]