

Half-yearly Examination - 2016-2017

BIOLOGY

Time : 2 Hrs. 15 min

F. M. : 80

Std. : VII

SECTION A (40 Marks)

(Attempt all the questions)

- I a. Name the following : (10)
1. This tissue helps in communicating the message through nerves.
 2. A red coloured fluid tissue
 3. The longest bone in human body
 4. Tissues that connects two bones at the joint.
 5. Thread like branches arising from the cyton of nerve cells.
 6. Tiny bristles embedded in the skin of earthworm, on the under surface.
 7. Bony framework present within the body
 8. Muscle bundle present on either side of vertebral column in fish
 9. A bone towards little finger side in the lower arm
 10. It is the only flying mammal
- b. Fill in the blanks : (Do not copy sentences) (7)
1. _____ also form discs between the vertebrae of backbone to avoid friction
 2. Fluid tissues transports _____ and _____ to all the body cells
 3. The connection of terminal ends of axons with dendrites is called _____
 4. _____ is propelling water by movements.
 5. Birds have _____ bones
 6. Ribcage is formed of a median plate like _____ and _____ pairs of ribs.
 7. _____ enclose reproductive organ, large intestine and rectum.
- c. State true or false. If false, rewrite the correct answers. (7)
1. Cardiac muscles are voluntary muscles
 2. Wings are found in insects birds and bats.
 3. Bones are elastic skeletal tissue
 4. Blood is a fibrous connective tissues
 5. Fishes have two types of fins

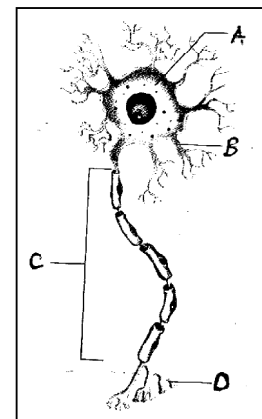
6. Adipose tissues stores fats in the adipose cells.
7. The tendons are formed of yellow elastic fibrous tissue.
- d. Define : (5)
- i. Bone marrow ii. Down stroke iii. Lymph iv. Cartilage v. Tendons
- e. Match the following : (6)
- | | |
|--------------------------|-----------------------------------|
| 1. Backbone | ● 206 bones |
| 2. Down stroke | ● streamlined body |
| 3. Floating | ● resting on the surface of water |
| 4. Skeleton | ● plasma |
| 5. Fish | ● effective stroke |
| 6. Fluid matrix in blood | ● vertebral column |
- f. Give one function of each : (5)
- Sensory epithelium
 - Epithlium tissue
 - Ribs
 - Cranium
 - Tailfin

SECTION B - 40 Marks)

(Answer any four)

Q2. a. Look at the following diagram and answer the given questions :

- Label the parts marked A to D in the following diagram. (4)
- Give the functions of A to C (2)
- Which tissue does this make (1)
- What is its function? (2)
- Where are these cells located? (1)



Q3. a. List any three functions of bones :

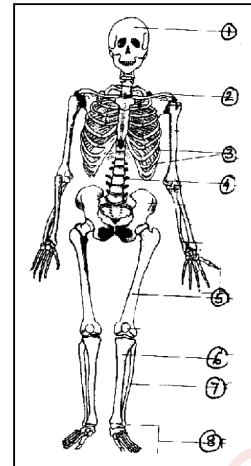
b. Give the location of the following : (one each)

- Squamous epithelium
- Non-striated muscle
- Areolar tissue

c. What is the function of 'Adipose tissue'?

d. Name the four major types of animal tissue.

- Q4. a. Label the marked part 1-8
 b. What is bone marrow?
 c. Identify and name the given diagram and write its three functions.
 d. Name the part of skeleton that encloses the brain.



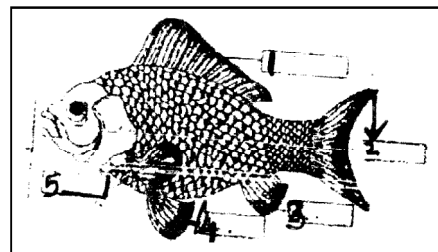
- (4)
 (1)
 (1+3)
 (1)

- Q5. a. Differentiate between locomotion and movement.
 b. Give any two flying features of birds.
 c. Name the types of muscles found in earthworm.
 d. Write any three types of movement found in frogs.
 e. Name the organism which show the following movements :
 i. crawling ii. gliding

- (2)
 (2)
 (2)
 (3)
 (1)

- Q6. a. Give reasons :
 i. Earth worm has setae in its body wall.
 ii. We are able to rotate our arms in circular motion
 b. Label the parts 1-5 in the given figure

(1½ x 2 = 3)



(½x5=2½)

- c. Give two function of ribs.
 d. Name the three types of blood cells that floats in plasma and give the function of any one.

- (2)
 (2½)