

- ii. With the help of an example relate the shape of a cell to its function. (2)
- iii. State any three differences between an animal cell and a plant cell. (3)

**Half Yearly Examination - 2018-19**

**Biology**

**Class : VI**

**Time : 2 Hrs. + 15 min.**

**Full Marks : 80**

(Section A - 40 marks)

(Attempt all questions)

- Q1. a. Fill in the blanks. (10)
- i) The cellular structures are called \_\_\_\_\_
  - ii) Vitamin \_\_\_\_ and \_\_\_\_ are soluble in water.
  - iii) The additional covering outside the cell membrane in plant cell is
  - iv) \_\_\_\_ is the absence of disease and state of physical mental, emotional and social well-being.
  - v) Food that has lot of calories but little nutritional value is called \_\_\_\_ food.
  - vi) \_\_\_\_ is a disease caused by deficiency of vitamin C.
  - vii) \_\_\_\_ is the fibre content of food which remains undigested.
  - viii) Disease causing microorganisms are called \_\_\_\_\_
  - ix) \_\_\_\_ are termed as suicide bags of cell.
- b) Name the following : (8)
- i) This organelle is known as the power house of the cell.
  - ii) This plastid imparts colour to flowers and fruits.
  - iii) An antibiotic.
  - iv) This acts like the brain of the cell.
  - v) A source of iron.
  - vi) The process of creating resistance in the body, with the help of vaccines.

e) Correct the following statements by changing the underlined words and rewriting the complete sentence: {5}

- i) BCG prevents measles, mumps and rubella
  - ii) Yeast is a prokaryotic cell.
  - iii) Leewenhoek coined the term 'cell'.
  - iv) Mould is a unicellular organism.
  - v) RBC's have no fixed shape to engulf bacteria.
- f) Choose and write the odd one out and write the category the others belong to {4}

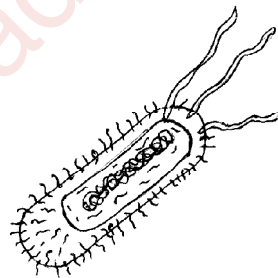
- i) Cell membrane, cell wall, granules, ribosomes.
  - ii) Diabetes, beri beri, scurvy, anemia
  - iii) Rice, wheat, potato, egg
  - iv) Amoeba, hydra, man, mushroom
- g) Give two examples for the following : {3}
- i) Food rich in protein
  - ii) Source of roughage
  - iii) Disease caused by contaminated food and water

SECTION B (40)

(Attempt any 4 questions)

Q2 i) Answer questions a) to e) with reference to the diagram given below.

- a) Name the type of cell shown in the diagram.
- b) What is the unique feature observed in these types of cells?



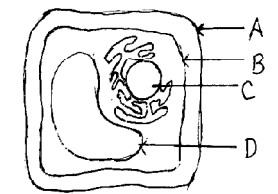
- c) Give an example of this kind of cell.
- a) Name the cell which shows the exact opposite cell structure to the cell shown in the diagram. {3}
- e) Give one point of difference between these two types of cells.
- ii) Mention any two methods to prevent diseases. {2}
- iii) It is said that growing child needs a diet rich in protein. Why do you think so? {2}
- iv) Define a balanced diet. {1}

- Q3 i) Justify the statement "diet varies from person to person" with suitable examples. {2}
- ii) Differentiate between the following pairs on the basis of what is mentioned in the brackets. {2}
    - a) Carbohydrates and fats (effect of deficiency)
    - b) Mitochondria and plastids (function)
  - iii) Complete the table given below. Do not copy the table. {6}

MINERALS	SOURCES	DEFICIENCY SYMPTOMS
Calcium	a)	b)
c)	d)	goitre
Iron	e)	f)

Q4. i. Answer the following questions with reference to the diagram given : {5}

- a) Name the type of cell shown
- b) Label A, B, C and D
- c) State one function each of A and D



- vii) A group of microorganisms that have the smallest cells in the world.
- viii) Units of heredity.
- c) Choose and write the correct option from each of the options given below: (5)
- i) Which of the vitamin is not found in milk?  
 a) Vitamin A    b) Vitamin B    c) Vitamin C  
 d) Vitamin D
- ii) Lack of vitamin A leads to which disease?  
 a) Rickets    b) Anemia    c) goitre    d) night blindness
- iii) An ameboid cell in our body is  
 a) RBC    b) WBC    c) neuron    d) muscle cell
- iv) Ribosomes synthesise  
 a) Lipids    b) fats    c) carbohydrates    d) proteins
- v) Which of these is a non-communicable disease?  
 a) Cancer    c) Cholera    b) measles  
 d) athlete's foot
- d. Match the following by rewriting the correct pairs together. (5)
- |                 |                 |
|-----------------|-----------------|
| i) Vitamin B1   | Rickets         |
| ii) Vitamin B2  | Beri beri       |
| iii) Vitamin B4 | Ariboflavinosis |
| iv) Vitamin C   | Pellagra        |
| v) Vitamin D    | Scurvy          |
|                 | Anemia          |
|                 | Night blindness |

- ii. Complete the given table : (4)

Disease	Causative Agent	Spread by
a) measles	plasmodium c)	b) d)

- iii. What would happen if we do not eat vegetables and fruits. (1)

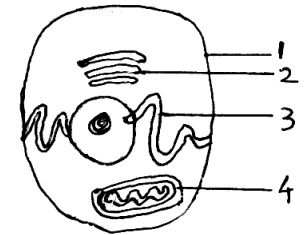
- Q5. i. Given below is a type of cell. Study it and answer the questions that follow : (5)

- a) Name the type of cell shown

- b) Label parts 1 to 4

- c) State one difference between parts 3 and 4

- d) State one function of part 1.



- ii. Give two differences between communicable and non-communicable disease. (2)

- iii. What would happen if we do not take adequate rest? (2)

- iv. Mention any one method of maintaining dental hygiene (1)

- Q6. i. Given below is the diagram of an insect closely related with certain human diseases. (5)

- a) Name the insect

- b) Name any 2 diseases which it spreads

- c) Where does it breed?

- d) Is it a germ, a pathogen or a carrier?

