

KERALA SAMAJAM MODEL SCHOOL
Half Yearly Examination 2016-2017

Std. : IV
Subject : SCIENCE

Full Marks : 80
Time : 2 Hrs.+15min.

Q1. Define the following :— **[2x5=10]**

- (a) incubation (b) adaptation (c) reproduction
(d) parasites (e) terrestrial animals

Q2. Fill in the blanks (Do not copy the sentences). **[10]**

- (a) The _____ of a fish helps in changing the direction.
(b) A young cockroach is known as _____.
(c) We should always beware of the _____.
(d) _____ are the most common animal that inhabits the South Pole.
(e) Spring anteater is a _____ but it lay eggs.
(f) We should turn off the gas _____ when it is not in use.
(g) Whales and dolphins have _____ to breathe
(h) a body _____ is called a maggot.
(i) We should wear _____ clothes while working in the kitchen.
(j) The giant panda feed on _____ shoot.

Q3. Give two examples of :— **[2x5=10]**

- (a) Animals that give birth to young ones _____
(b) Scavengers _____
(c) Aquatic animals _____
(d) Animals that lay egg. _____
(e) Endangered animals. _____

Q4. State True or False and rewrite the false statements correctly :— **[5]**

- (1) Tortoise and Snails have hard shell on their body.
(2) Reptiles give birth to young ones.
(3) Accidents can be avoided if we are careful.
(4) A lung fish undergoes hibernation.
(5) Do not touch any electrical device with dry hands.

Q5. Give one word for :— (Do not copy the sentences) **[5]**

- (1) Resting state of some animals to avoid extreme cold _____.

- (2) The time period for which an animal or a plant lives _____.
- (3) The process of shedding old skin _____.
- (4) Organisms from which parasites derive their food _____.
- (5) Animals that live on trees _____.

Q6. Tick the correct answer (Do not copy the sentences)

[4]

- (a) _____ is the hard outer covering of an egg.
 (i) Allumen (2) Yolk (3) Shell (4) none of these
- (b) Always _____ in the presence of an adult.
 (i) pluck flowers (2) hit each other (3) swim (4) damage tree.
- (c) A _____ uses its hard shell to protect itself from enemies.
 (i) Porcupine (2) Snail (3) Kangaroo (4) Rhinoceros.
- (d) Which of the following is a parasite ?
 (i) Vulture (2) Hyena (3) Tapeworm (4) Eagle

Q7. Match the following and rewrite the sentences.

[6]

- | A | B |
|----------------|--|
| (a) Life cycle | layer of fat in the body of some animal. |
| (b) First aid | the ability of some animals to blend with their surrounding. |
| (c) Blubber | a cream or lotion that helps in reducing or preventing infection. |
| (d) Hatching | the development of an animal from the embryo to the adult. |
| (e) Camouflage | the immediate help given to a person who is injured or sick. |
| (f) Antiseptic | the process in which body birds break open the egg shell and come out. |

Q8. Differentiate between the following :

[3x2=6]

- (1) Arboreal animals and Aerial animals.
- (2) Mammals and marsupials.

Q9. Give reasons :—

[3x2=6]

- (a) Why shouldn't we switch on any electrical device when there is a gas leakage ?
- (b) Why do whales and dolphins come up to the surface of water to breathe fresh air.

Q10. Answer the following :— (Do not copy the questions)

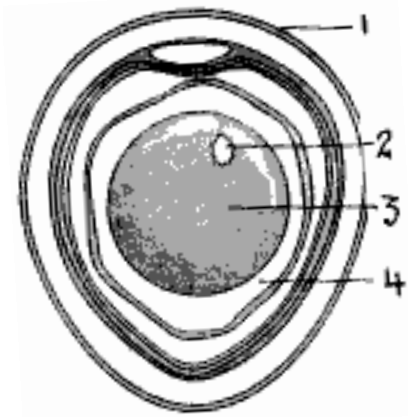
- (a) Write any three main features of terrestrial animals. [3]
- (b) List down any three safety rules you should follow at school. [3]
- (c) What are the two ways in which animals reproduce ? [2]
- (d) What is first aid ? [2]

Q11. (a) Draw a neat well labelled diagram of "The Life Cycle of a housefly".

[4]

(b) Label the given diagram of the inside of an egg.

[4]



▲ The inside of an egg

Downloaded From www.icseboard.org