

WESTERN MUSIC PAPER 1 (THEORY)

Maximum Marks: 70

Time Allowed: Three hours

(Candidates are allowed additional 15 minutes for only reading the paper.

They must NOT start writing during this time.)

Answer all questions in Section A, Section B and Section C.

Section A consists of objective / very short answer questions.

Section B consists of short answer questions.

Section C consists of long answer questions.

The intended marks for questions or parts of questions are given in brackets [].

SECTION A – 14 MARKS

Question 1

- (i) The Dominant 7th chord of 'A' major scale is: [1]
- (a) B7
 - (b) A7
 - (c) E7
 - (d) D7
- (ii) The second inversion starts from _____ note of a chord. [1]
- (a) 1st
 - (b) 3rd
 - (c) 5th
 - (d) 8th
- (iii) The relative minor of D major scale is: [1]
- (a) Cm
 - (b) F#m
 - (c) Fm
 - (d) Bm

This Paper consists of 5 printed pages and one blank page.

- (iv) Which one of the following is B^b major chord? [1]
- (a) B^b D F
 - (b) B^b D^b G^b
 - (c) B^b E F
 - (d) B^b C D
- (v) $\frac{4}{4}$ Time Signature has _____ crotchets in a bar. [1]
- (a) four
 - (b) eight
 - (c) two
 - (d) one
- (vi) State whether the following are True or False: [3]
- (a) Figured Bass is also known as Thorough Bass.
 - (b) Beethoven's Symphony no. 2 in D maj Op. 36 was written during 1801-1802.
 - (c) The major chord 'A' consists of two notes.
- (vii) Soprano, Alto, Tenor and _____ are the four parts of Western Music. [1]
- (viii) Johann Sebastian Bach's composition Prelude and Fugue in G minor are taken from the book _____. [1]
- (ix) In which part of a melody is Time Signature denoted? [1]
- (x) Who composed *Erl Kenig* (The Erl King)? [1]
- (xi) Write the *three* individual notes of D minor chord. [1]
- (xii) How many notes does a 7th chord have? [1]

SECTION B – 28 MARKS

Question 2

[4]

- (i) Write the Dominant 7th chord of F major scale. Mention the *three* inversions with their individual notes.

OR

- (ii) What is a *modulation*? Briefly explain Relative, Dominant and Sub-Dominant modulations with an example for each.

Question 3

[4]

Write a short note on Rhythmic Structure.

Question 4

[4]

Give the meaning of *unessential notes*. Mention the *two* types of Unessential Notes.

Question 5

[4]

- (i) Write Chord Progression for 'A' minor scale.

OR

- (ii) Write Chord Progression for 'E' major scale.

Question 6

[4]

Briefly explain Caesar Frank's composition *The Last Movement in Piano and Violin Sonata*.

Question 7

[4]

State *any four* advantages of Figured Bass.

Question 8

[4]

What is a *relative minor scale*? How does it work in a melody?

SECTION C – 28 MARKS

Question 9

[7]

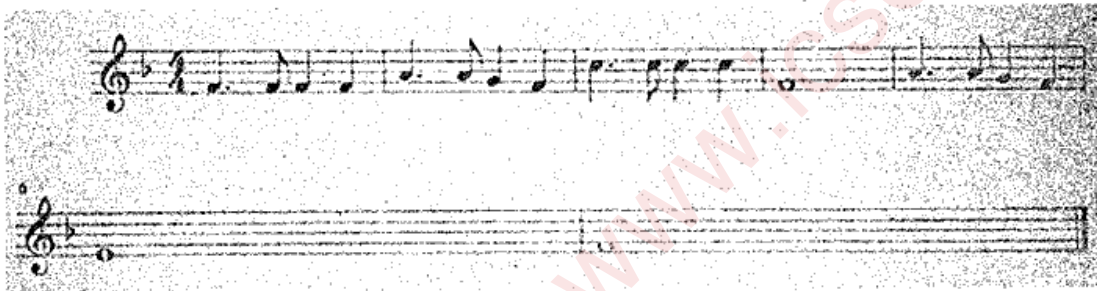
Write a melody in $\frac{3}{4}$ Time Signature on 'C' major scale for the lyrics given below:

"I like to ride my bicycle,
I ride it every day.
I ride it when I go to school,
Or when I want to play."

Question 10

[7]

Write four-parts harmony in a simple Pianoforte style for the melody given below:



Question 11

[7]

Mark the appropriate Figured Bass numerals for the melody given below:



Question 12

[7]

- (i) Analyse the compositions given below.
 - (a) Four movements in Beethoven's Symphony no. 2.
 - (b) *Prelude* by Bach.

OR

- (ii) Discuss the contrast in tone in Schubert's in *Erl Kenig* (The Erl King).