

GEOGRAPHY

Maximum Marks: 70

Time Allotted: Three Hours

Reading Time: Additional Fifteen Minutes

Instructions to Candidates

1. You are allowed an **additional fifteen minutes** for only reading the question paper.
2. You must **NOT** start writing during the reading time.
3. This question paper has **10 printed pages and a map**.
4. It is divided into **three** sections and has **thirteen** questions in all.
5. All questions are compulsory.
6. Section A has **fourteen subparts** which are very short answer questions. Each question carries 1 mark.
7. While attempting **Multiple Choice Questions** in Section A, you are required to **write only ONE option as the answer**.
8. **Sketch maps and diagrams** should be drawn wherever they serve to **illustrate your answer**.
9. **Make the index/ legend for Q1(A) section on the Map only. Answers for Q1(B) should be written in the answer booklet only.**
10. **Section B** has **seven** questions which are short answer questions. Each question carries 4 marks.
11. **Section C** has **four** questions which are long answer questions. Each question carries 7 marks.
12. **Internal choices** have been provided in **three questions in Section B** and in **one question in Section C**.

Instruction to Supervising Examiner

1. Kindly read **aloud** the Instructions given on page 1 to all the candidates present in the examination hall.
-

Downloaded From www.icseboard.org

SECTION A – 14 MARKS

Question 1

A. Refer to the given outline Map of India and attempt subparts (i) and (ii) on map only.

(i) Mark and label the following on the given outline Map of India. [3]

- (a) The North Eastern hill responsible for the highest rainfall in India.
- (b) The plateau that covers the maximum area of the Indian Peninsula.
- (c) The largest indentation on the South Eastern coast of Gujarat.

(ii) Label the following on the outline Map of India. [3]

- (a) The iron and steel plant marked S is _____.
- (b) The river marked M, which forms a badland and is a tributary of the Yamuna, is _____.
- (c) The state with the lowest level of urbanisation marked T is _____.

B. Refer to the given outline Map of India, identify the correct option and write it in the answer booklet provided to you.

(i) The longitude of India marked R is: [1]

- (a) $68^{\circ}7'E$
- (b) $78^{\circ}30'N$
- (c) $82^{\circ}30'E$
- (d) $97^{\circ}25'N$

(ii) The artificial port marked V is: [1]

- (a) Mumbai
- (b) Chennai
- (c) Kochi
- (d) Kolkata

- (iii) The city marked C, also known as the Cottonopolis of India, is: [1]
- (a) Hyderabad
 - (b) Bengaluru
 - (c) Pune
 - (d) Mumbai
- (iv) The state leading in the production of Tea, marked N is: [1]
- (a) Assam
 - (b) Tamil Nadu
 - (c) West Bengal
 - (d) Himachal Pradesh

Question 2

Given below are two statements marked Assertion and Reason. Read these statements carefully and choose the correct option.

- (i) **Assertion:** The percentage of net sown area in Andhra Pradesh is high. [1]
- Reason:** The area of barren land is low in Andhra Pradesh.
- (a) Both Assertion and Reason are true and Reason is the correct explanation for Assertion.
 - (b) Both Assertion and Reason are true but Reason is not the correct explanation for Assertion.
 - (c) Assertion is true and Reason is false.
 - (d) Both Assertion and Reason are false.

- (ii) **Assertion:** Rooftop rainwater harvesting is compulsory for all buildings in Tamil Nadu. [1]

Reason: The lack of perennial water resources resulted in an acute shortage of water in Tamil Nadu.

- (a) Both Assertion and Reason are true and Reason is the correct explanation for Assertion.
- (b) Both Assertion and Reason are true but Reason is not the correct explanation for Assertion.
- (c) Assertion is true and Reason is false.
- (d) Both Assertion and Reason are false.

- (iii) The northwestern region of India experiences cold waves in winter. [1]

Select the statements that provide the correct reasons for this.

- (P) Temperate cyclones form over Mediterranean Sea and move eastwards.
- (Q) The westerly jet stream shifts and lies on 25°N latitude.
- (R) The northwestern region of the Ganga plains experiences continental climate.
- (S) Southwesterlies collect moisture and cause rainfall.

- (a) Only (P) and (Q)
- (b) Only (Q) and (R)
- (c) Only (Q) and (S)
- (d) Only (R) and (S)

- (iv) Observe the relation between the first two words and fill in the fourth word. [1]

Coffee : Karnataka :: Jute : _____.

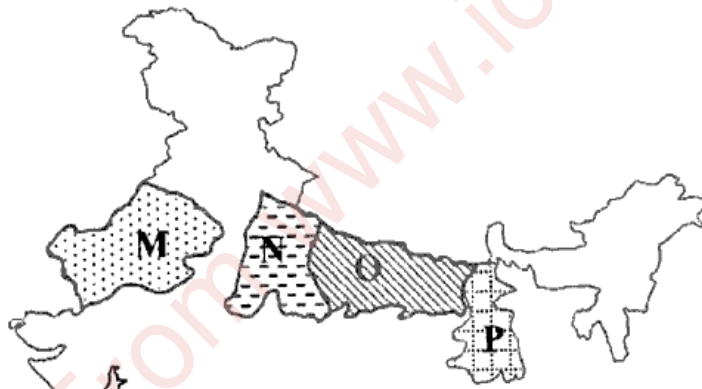
SECTION B – 28 MARKS

Question 3

- (i) The sun rises quite early in Arunachal Pradesh while it rises late over Gujarat yet both the states follow the same standard time. Explain this phenomenon by giving *two* reasons. [2]
- (ii) With the help of *two* reasons, explain the constant flow of water in the channel of the river Kaveri. [2]

Question 4

- (i) A marshy narrow belt of 20 – 30 kms in width lies at the foothills of the Shivaliks. [2]
Which relief feature of the Shivaliks has been referred to above? State *one* of its characteristics, apart from the one mentioned above.
- (ii) Identify *any two* regional divisions of the northern plains marked M, N, O and P on the map below. [2]



Question 5

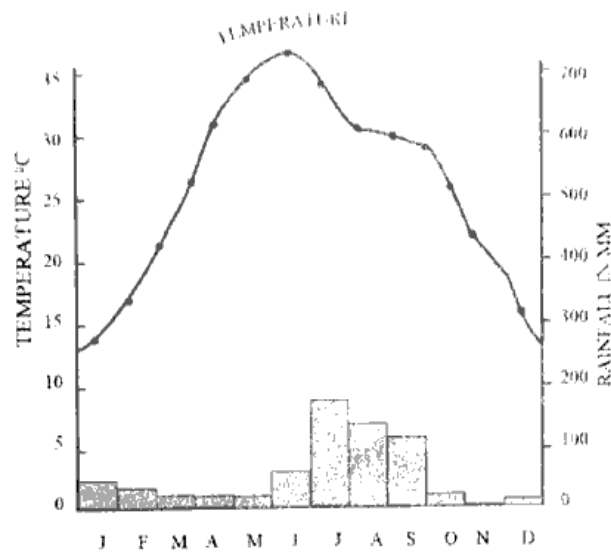
- (i) 'The monsoon season is expected to end on September 30, 2024 with above 'normal' rainfall across India. However, this year, rainfall distribution displayed unique patterns. Rajasthan, typically a dry state, recorded 56% more rainfall than usual, while four north eastern states along with Bihar, Punjab, Himachal Pradesh and Jammu and Kashmir faced significant deficit.'

(Source(edited): www.economictimes.india.com)

- (a) Name the phenomenon indicated by the 'unique patterns' of rainfall described above. What could be the cause for this phenomenon? [2]
- (b) Describe the situation that a low amount of rainfall may cause. [2]

OR

- (ii) Study the graph given below for **Station A** and answer the questions that follow.



- (a) Where is **Station A** located? Calculate the annual range of temperature [2]
for this station.
- (b) Name the sources of rainfall for the months of April-May and [2]
June-September.

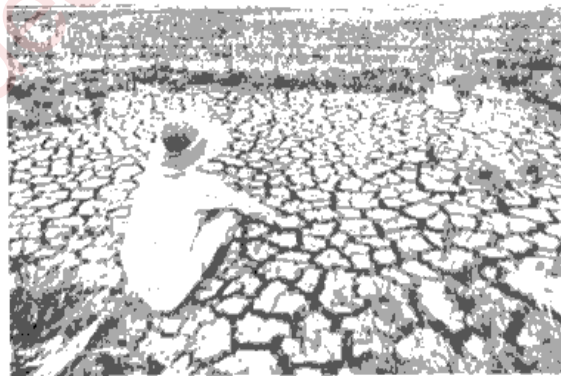
Question 6

[4]

The spatial distribution of population in India is uneven. Justify the statement by giving *four* arguments.

Question 7

The image below shows a land that has been abandoned by the farmer.



- (i) Identify the type of land shown above. [1]
- (ii) Why do you think the farmer has abandoned the land? [3]

Question 8

- (i) Answer the following questions.

India's Power Minister, Manohar Lal, on Tuesday chaired the Conference of Power Ministers of States and Union Territories where he asked states that are distant from coal resources to set up nuclear-based power plants. The move has also been made keeping in mind the rapidly-growing demand for electricity in the country.

(Source: www.ndtv.com)

- (a) State *any two* possible negative impacts of the 'move' referred to above. [2]
(b) Mention *any two* centres of nuclear power plants in India. [2]

OR

- (ii) Answer the following question.

The crop profile of Punjab has been changing ever since the Green Revolution. While the Green Revolution provided a few solutions to the problem of food security, Punjab began to face a completely new range of problems after this phase.

Discuss *any four* agricultural problems faced by the farmers of the above mentioned state post Green Revolution. [4]

Question 9

[4]

- (i) State *any four* concerns regarding the use of fossil fuels.

OR

- (ii) With the help of *four* reasons, explain why iron ore is considered the base of industrialisation in India.

SECTION C – 28 MARKS

Question 10

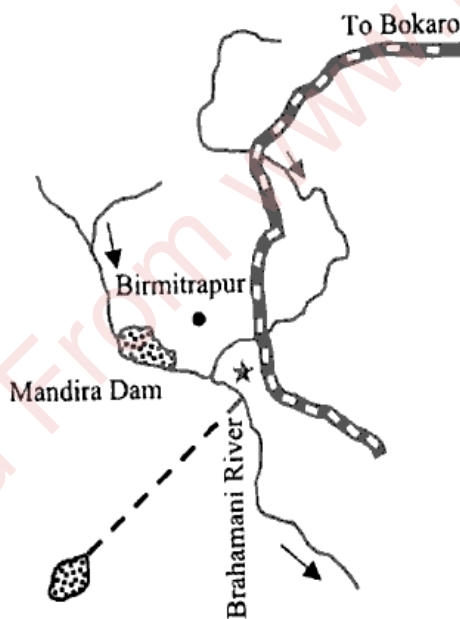
‘There are two things that the streets of Bengaluru are full of: cafes and software developers. Take a seat at your favourite cafe, and it won’t be long before you hear murmurs of startups and funding at a neighbouring table.’

(Source (edited): *timesofindia.indiatimes.com*)

- (i) Analyse *four* locational factors that have favoured the growth of Bengaluru as the Electronic Capital of India. [4]
- (ii) Name the hierarchy of planning regions in which Bengaluru is located. State *two* characteristics of the hierarchy of the planning region named by you. [3]

Question 11

- (i) The sketch map given below shows the location of an important integrated steel plant of India.



- (a) Name the steel plant and state its location. Which country collaborated with India to set up this steel plant? [3]
- (b) State *any four* locational advantages of this steel plant. [4]

OR

- (ii) Foreign tourist arrivals in India have remained low even before pre-pandemic level, despite a recovery in 2023. According to Rajiv Mehta, President, IATO, “We live in a competitive world. Our neighbours like Sri Lanka, Thailand are all wooing international tourists in various ways.”

(Source (edited): www.thehindu.com)

- (a) In the above context, suggest *any three* ways by which India can increase the inflow of international tourists. [3]
- (b) Name *any four* sectors which benefit through tourism. [4]

Question 12

‘In forests dwindling, wildlife’s plight,
Endangered species in endless flight.’

(Source: *Vanishing Giants* by Anonymous)

- (i) Comment on the significance of forests in the light of the above extract. [4]
- (ii) Enumerate *any three* causes for the situation described in the above extract. [3]

Question 13

Read the passage given below and answer the questions that follow

Saloni lived in Wayanad which was repeatedly hit by heavy rains and massive landslides. The catastrophic disaster resulted in large scale migration of its inhabitants including Saloni’s family. They moved to Hyderabad where she secured the job of Assistant Manager in an IT firm. A year later she moved to Germany as a part of a project that her company had undertaken.

- (i) Name and explain *any two* types of migration evident in the given scenario. [4]
- (ii) What problems do you think Saloni must have encountered on migrating to Hyderabad? [3]

UID NO.: INDEX NO.:

(This map must be fastened with all other answers)

Map for Q.NO. 1 MAP OF INDIA

