

GEOMETRICAL AND BUILDING DRAWING

Maximum Marks: 80

Time Allowed: Three hours

*(Candidates are allowed additional 15 minutes for only reading the paper.
They must NOT start writing during this time.)*

Question 1 is compulsory.

Answer any two questions from Question 2, Question 3 and Question 4.

The intended marks for questions are given in brackets [].

Read carefully the following notes before commencing:

- (i) All dimensions are in millimetres.
- (ii) Drafting should be accurate, neat and clear.
- (iii) The drawing must be done in pencil, clearly dimensioned and annotated.
- (iv) Wherever dimensions are not given, adopt suitable dimensions.
- (v) Write your unique identification number (UID) and index number at the bottom right-hand corner of your paper.

Question 1

[20]

Draw a free hand sketch showing a cross section of a window including sill and lintel.

Question 2

[30]

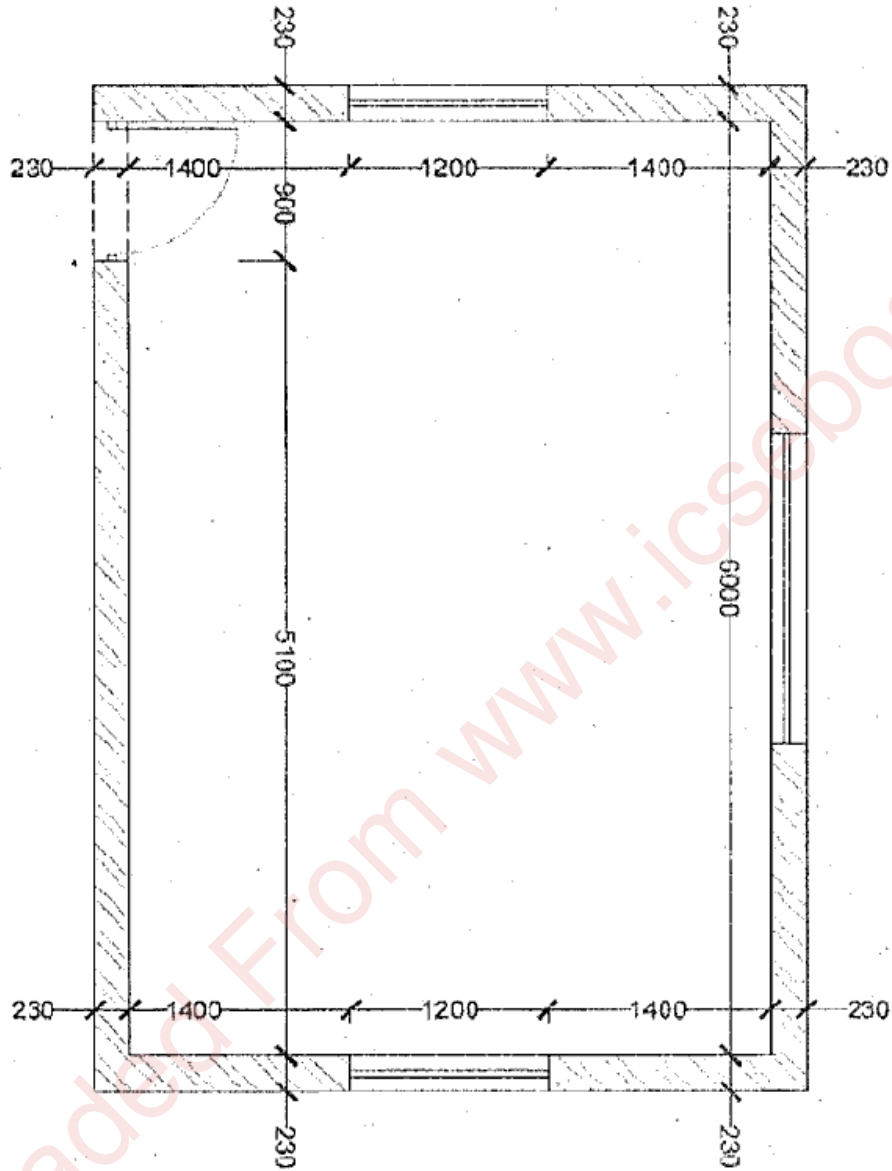
Draw the Plan of a Linear Staircase to 1:10 scale.
Width of the staircase is 2000mm and height of the respective floor shall be 3300mm.
Calculate the number of Treads and Risers accordingly.

This Paper consists of 3 printed pages and one blank page.

Question 3

[30]

Draw any Section of the room as shown in the *Figure* given below, showing all the details from foundation to parapet wall to suitable scale. The section should indicate single storeyed buildings with flat RCC roof.



Figure

Question 4

[30]

Draw free-hand sketches to illustrate the following terms and give definitions:

- (i) Flight
- (ii) Scotia
- (iii) Plan arrangement of Herring Bone bond
- (iv) Coping
- (v) RCC Lintel

Downloaded From www.icseboard.org